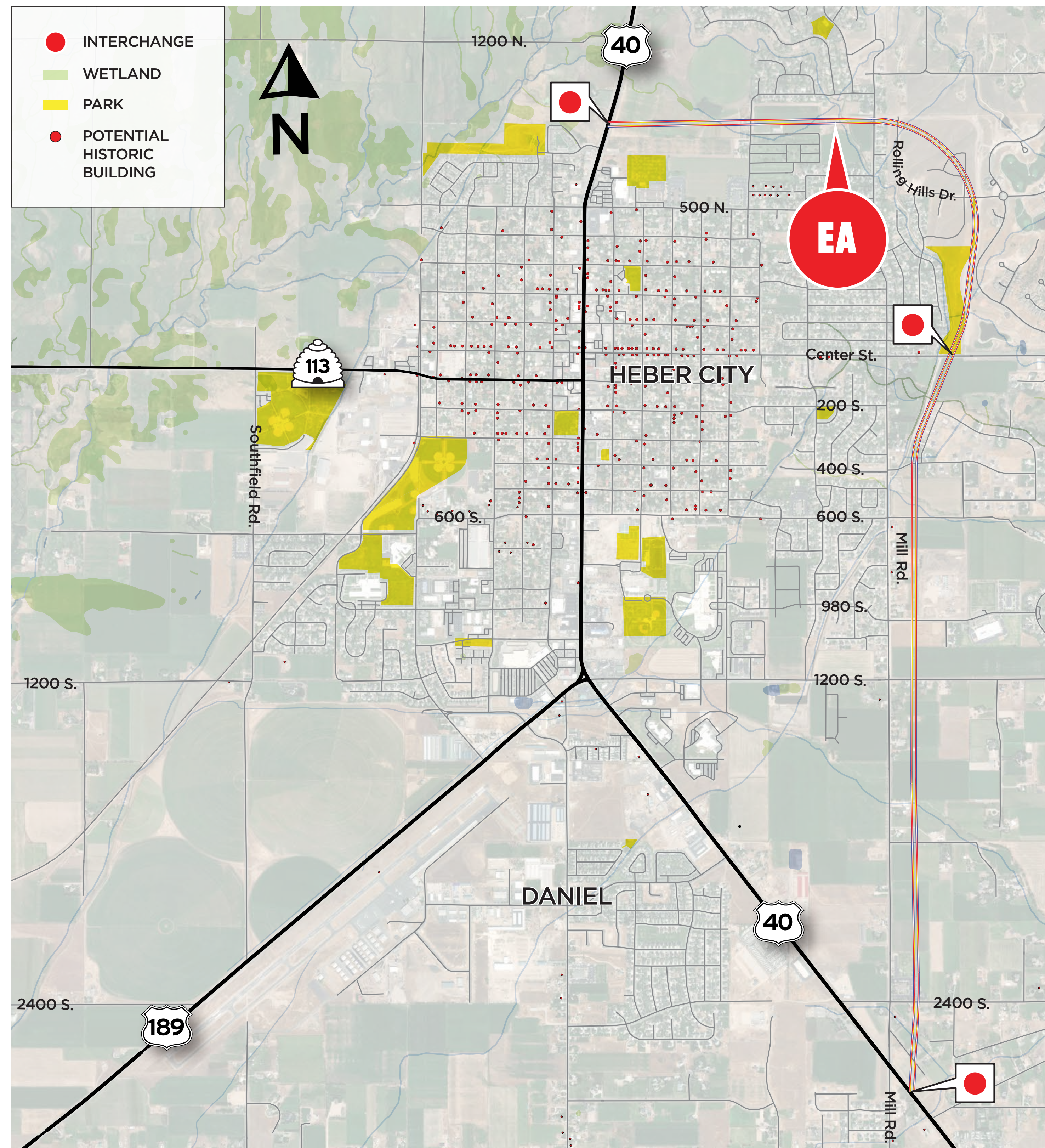


ALTERNATIVE EA

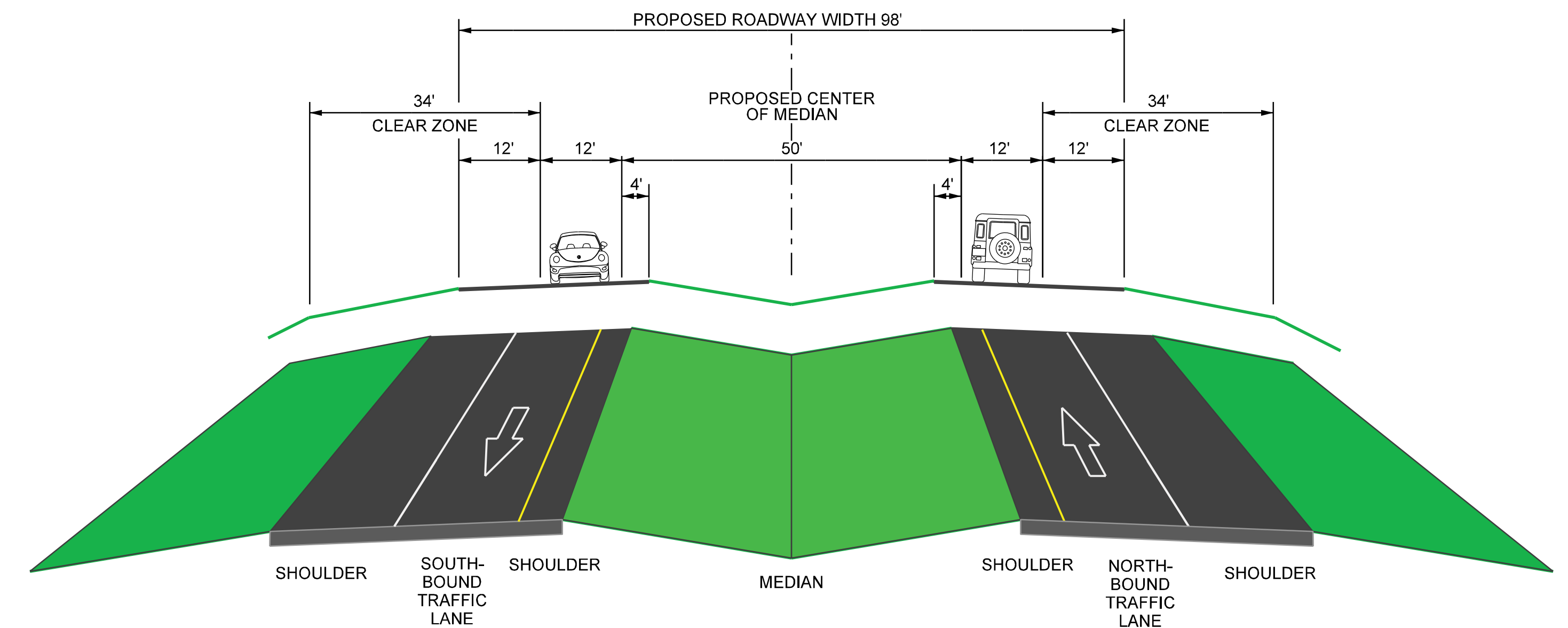
EAST BYPASS LIMITED-ACCESS GRADE-SEPARATED



Concept proposes a highway-type facility offset from 1200 East (Mill Road) with three interchanges: Center Street and the north and south connections to U.S. 40.



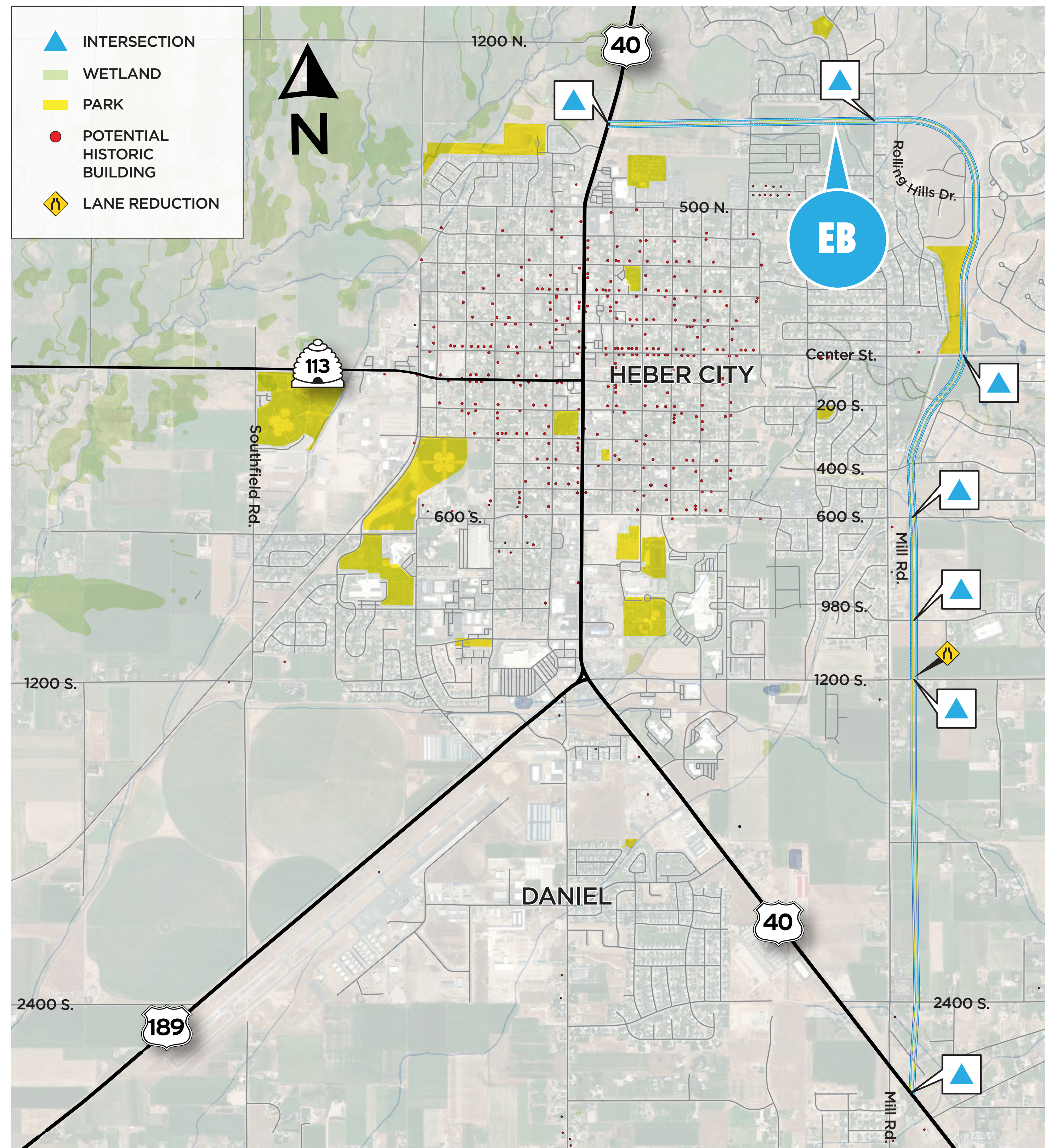
**PROPOSED EAST BYPASS LIMITED-ACCESS, GRADE SEPARATED
 (TWO LANE SECTION, ONE LANE IN EACH DIRECTION)***



**Sidewalks not shown on typical sections. Non-motorized transportation options will be developed for alternatives that are not eliminated during the screening process.*

ALTERNATIVE EB

EAST BYPASS PARKWAY AT-GRADE

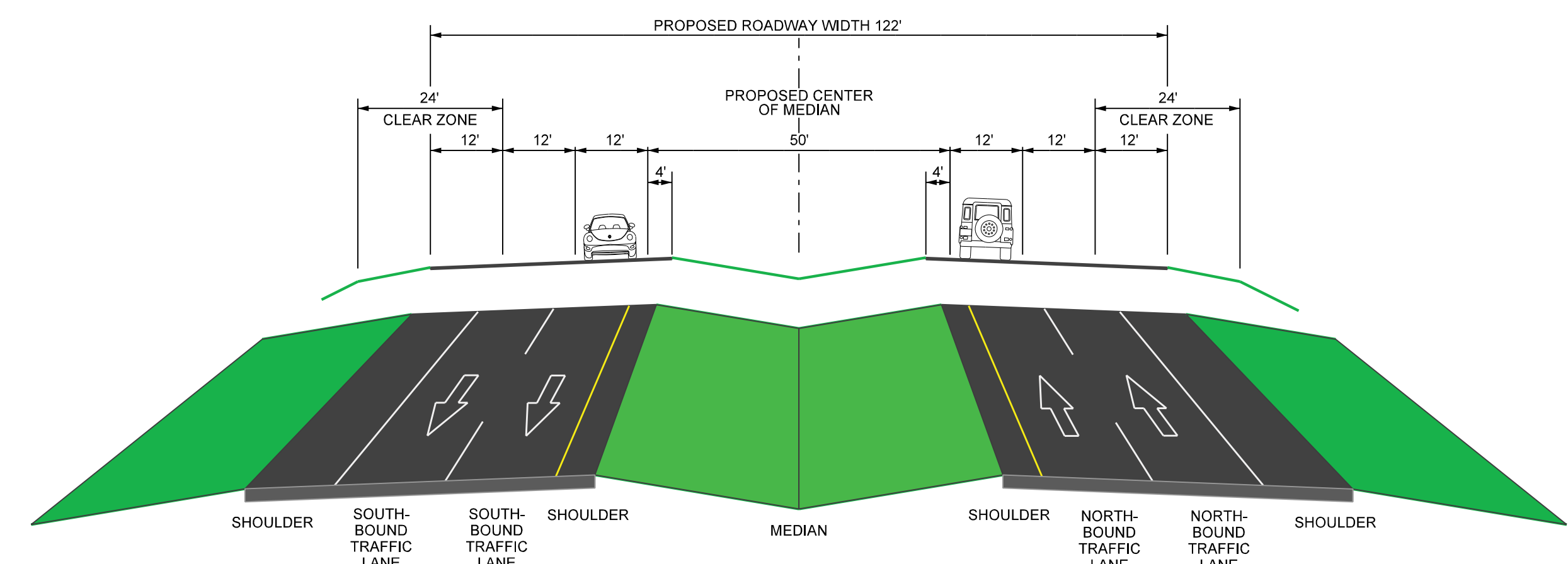


Concept proposes a parkway-type facility offset from 1200 East (Mill Road) with seven intersections at key locations.

**SPEED
 LIMIT
 55**

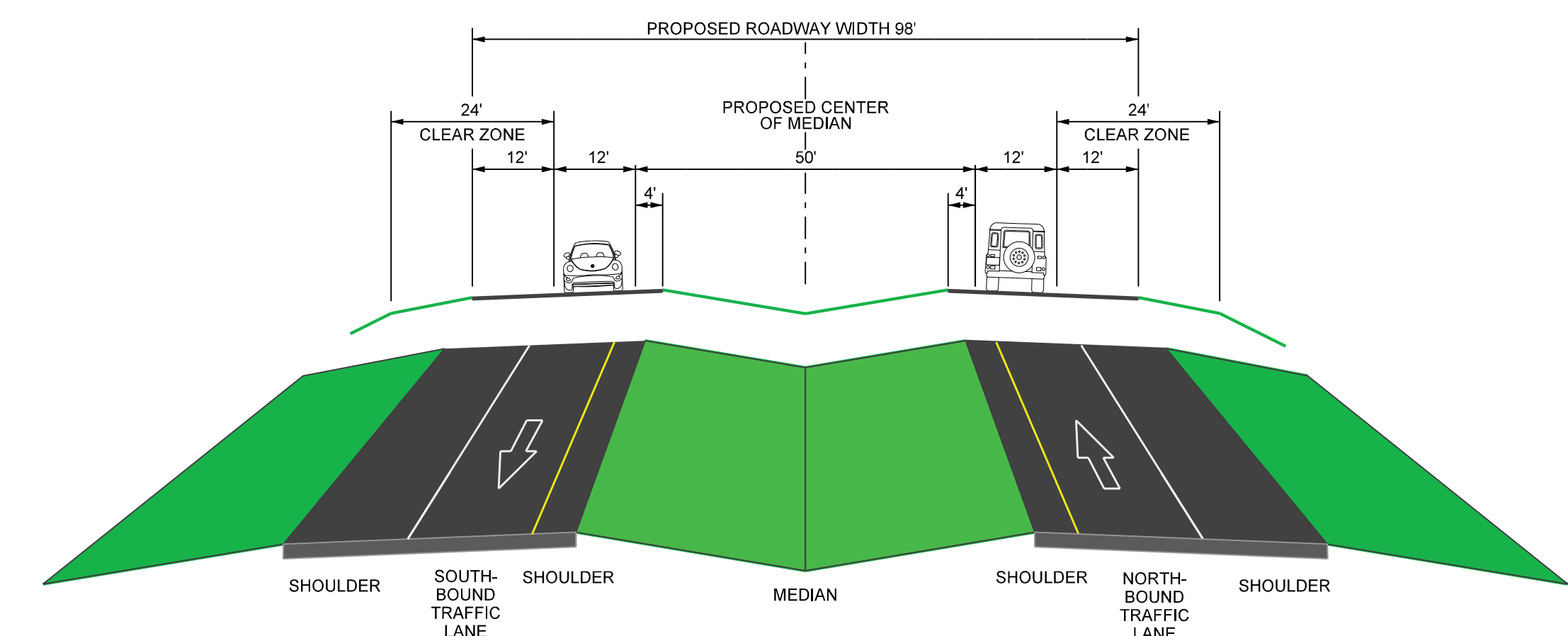
PROPOSED EAST BYPASS PARKWAY AT-GRADE (FOUR LANE SECTION, TWO LANES IN EACH DIRECTION)*

Concept would likely require a four lane section north of 1200 South.



PROPOSED EAST BYPASS PARKWAY AT-GRADE (TWO LANE SECTION, ONE LANE IN EACH DIRECTION)*

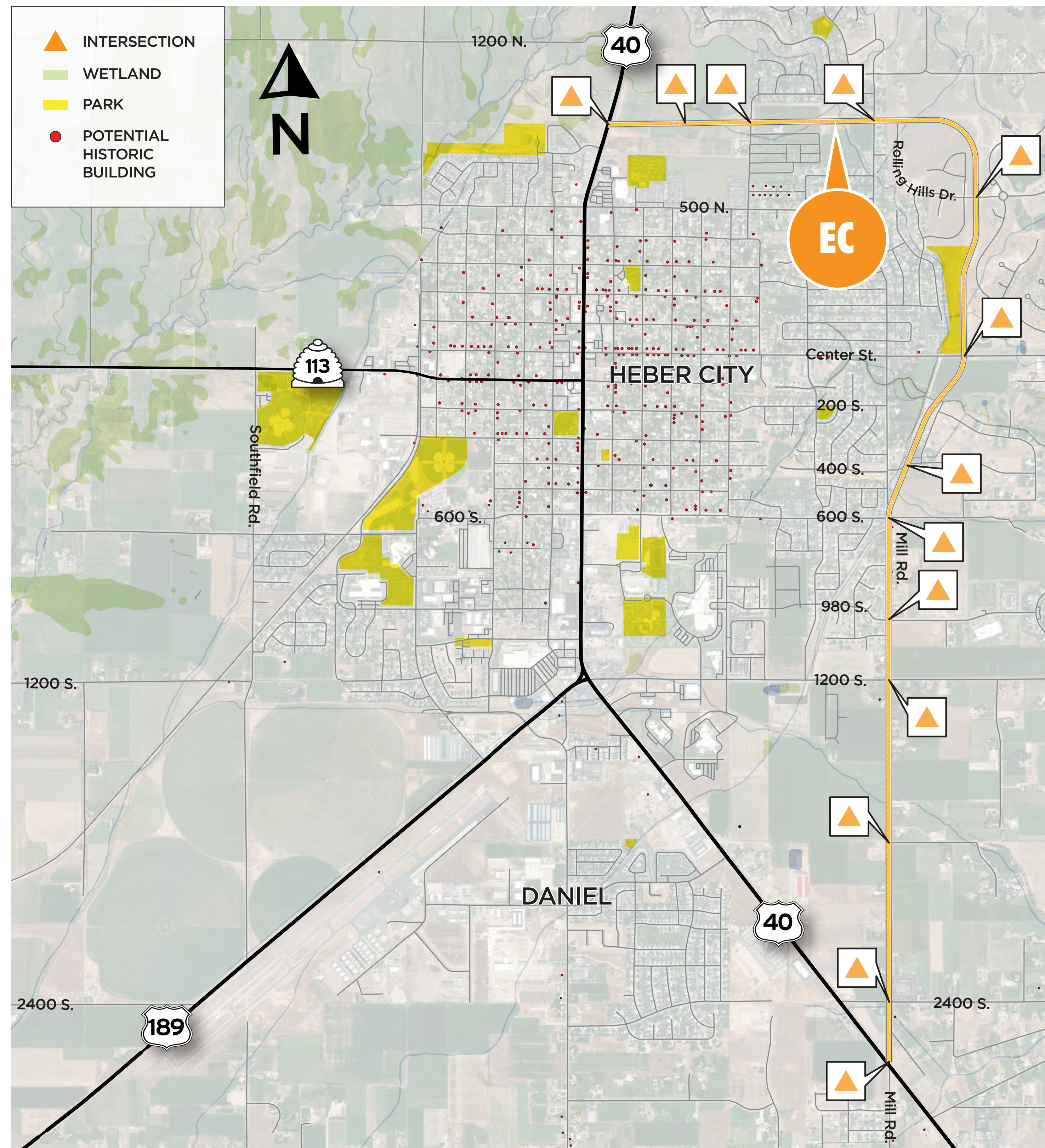
Concept would likely require a two lane section south of 1200 South.



*Sidewalks not shown on typical sections. Non-motorized transportation options will be developed for alternatives that are not eliminated during the screening process.

ALTERNATIVE EC

EAST BYPASS ARTERIAL AT-GRADE



SPEED
LIMIT
45

PROPOSED EAST BYPASS ARTERIAL AT-GRADE (FIVE LANES)*

Concept would likely require a five lane section along entire route.

