



Heber Valley Corridor



ENVIRONMENTAL IMPACT STATEMENT

Heber City Council Meeting

August 19, 2025

Completed Activities

Local Government Coordination

- Met with Heber Valley Special Services District
- Provided updates in July
 - Update at the [Wasatch County Interlocal Meeting](#) on Jul. 9 (UDOT at 1:49:44)

Public Outreach

- Responded to property owner inquiries and met with owners as requested

Ongoing Activities

Public Outreach

- Coordinating with potentially impacted property owners, if requested

Detailed Alternatives Analysis

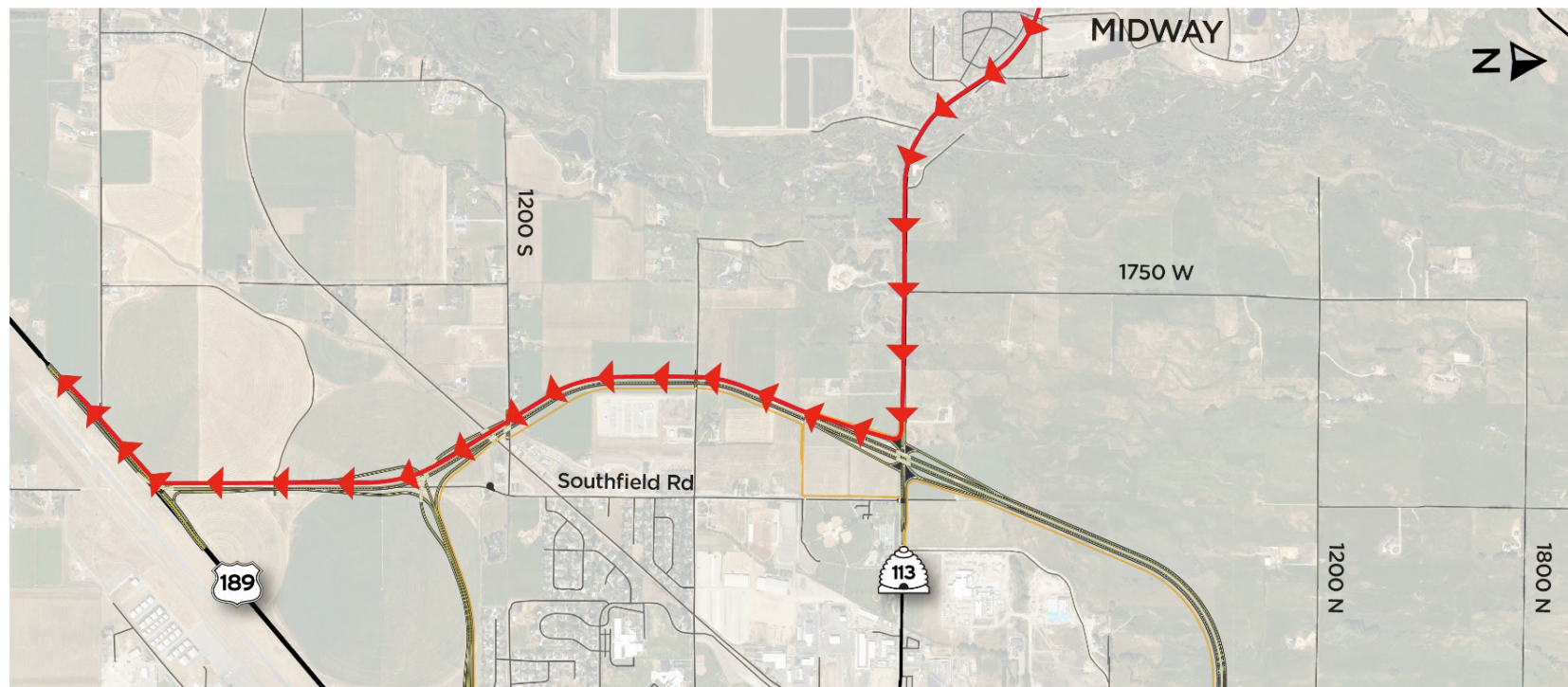
- Conducting field surveys in areas that haven't been surveyed previously
- Evaluating the project alternatives in depth, including benefits and impacts
- Identifying the preferred alternative

Local Government Coordination

- Meeting with Heber City and Wasatch County staff on a monthly basis
- Will meet with other local governments, if requested

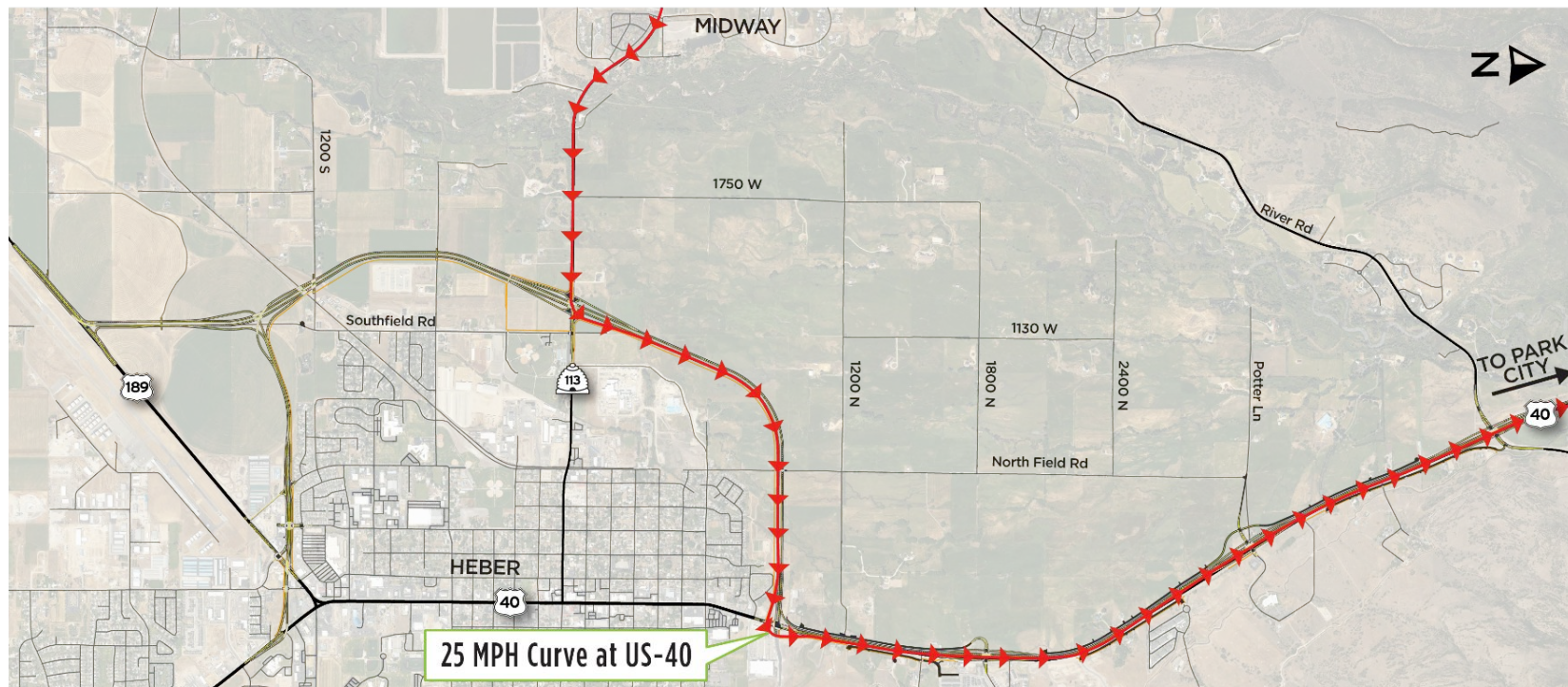
Midway Access to Corridor

Alternative A & Alternative B - Southbound



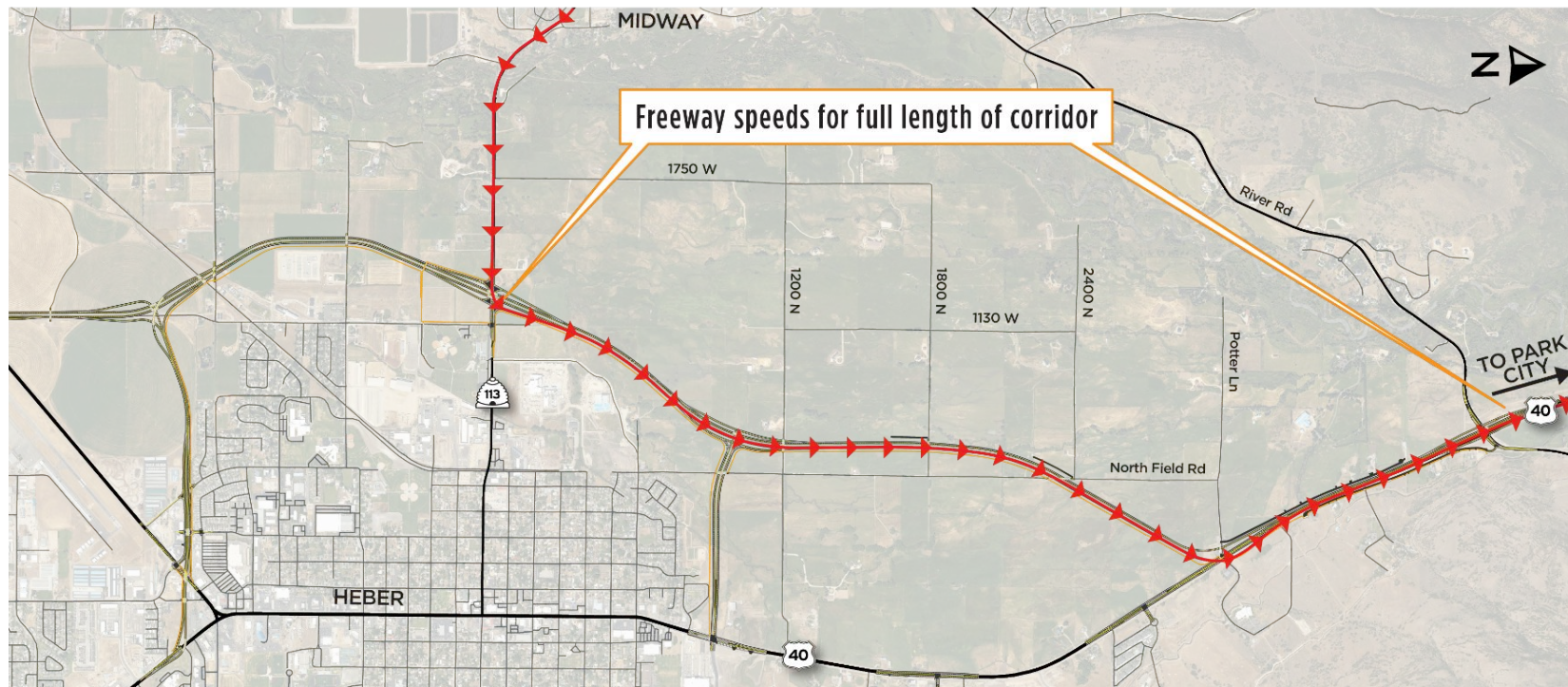
Midway Access to Corridor

Alternative A - Northbound



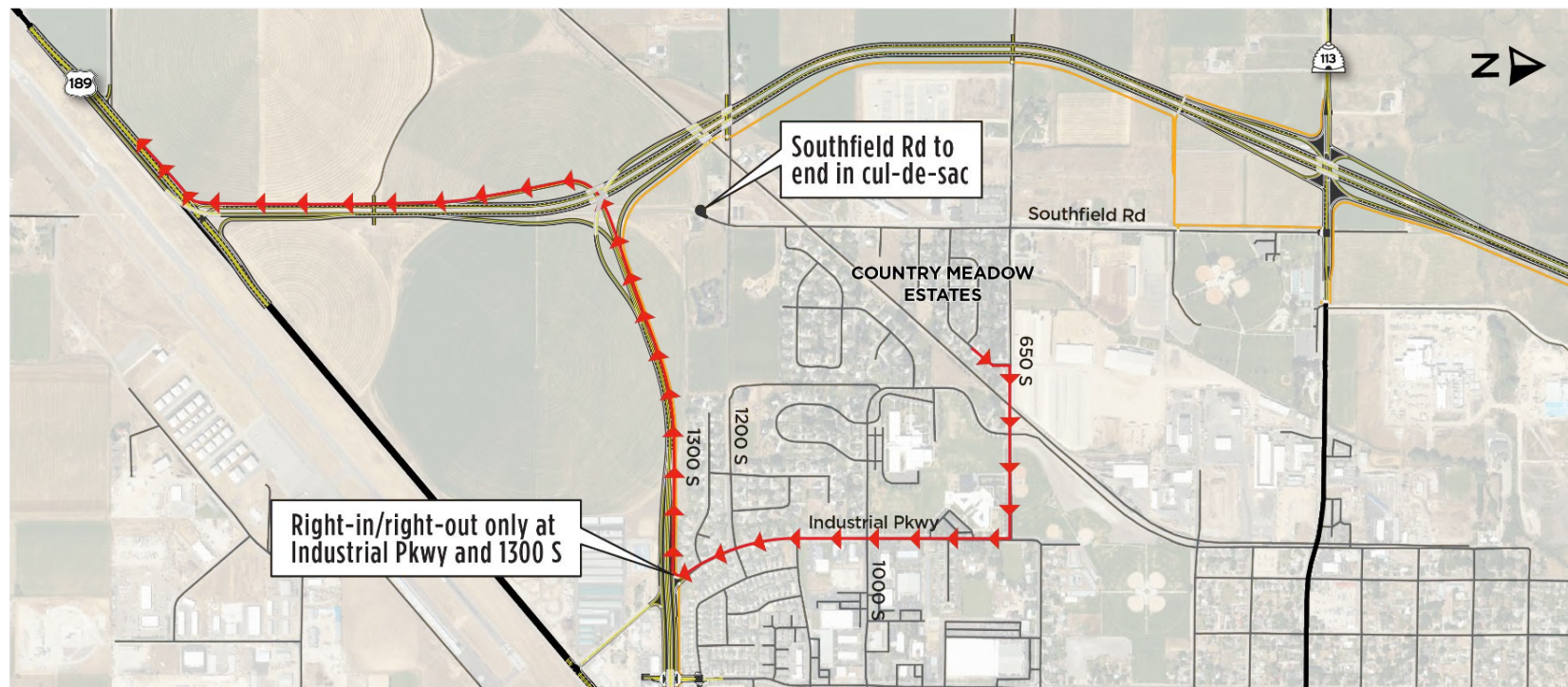
Midway Access to Corridor

Alternative B - Northbound



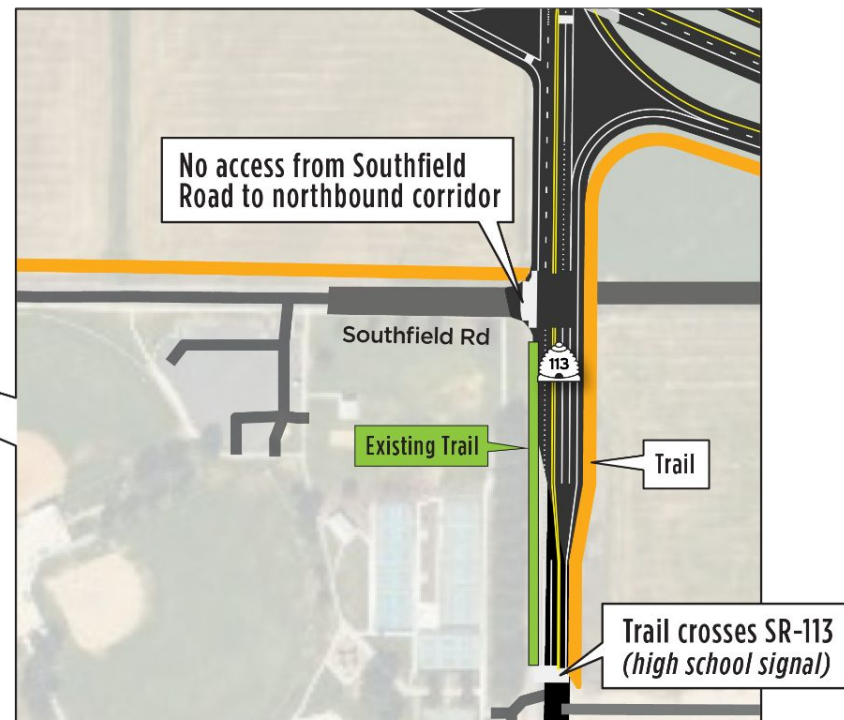
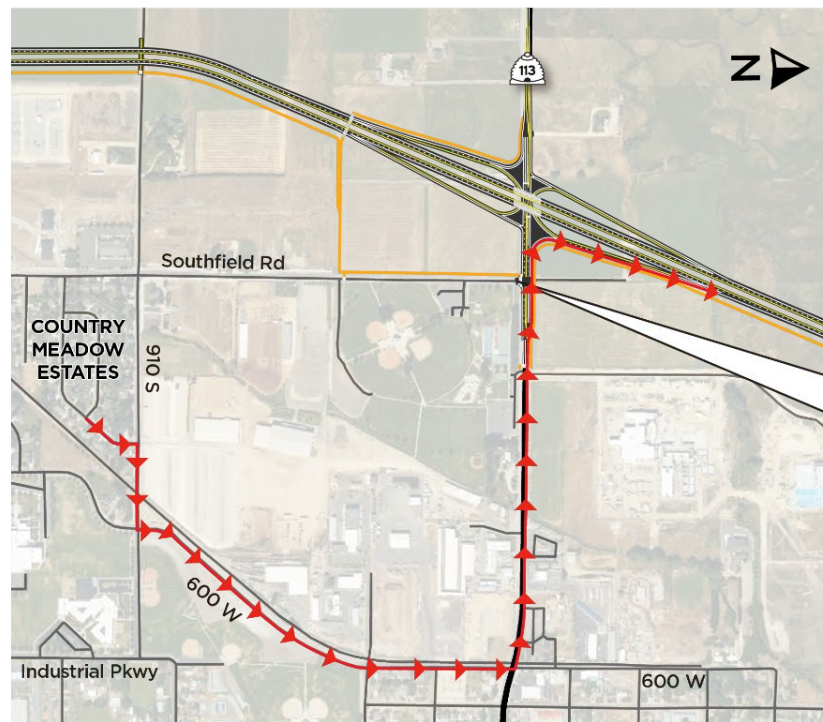
Southfield Road Neighborhood Access

Alternative A & B (access to southbound corridor)



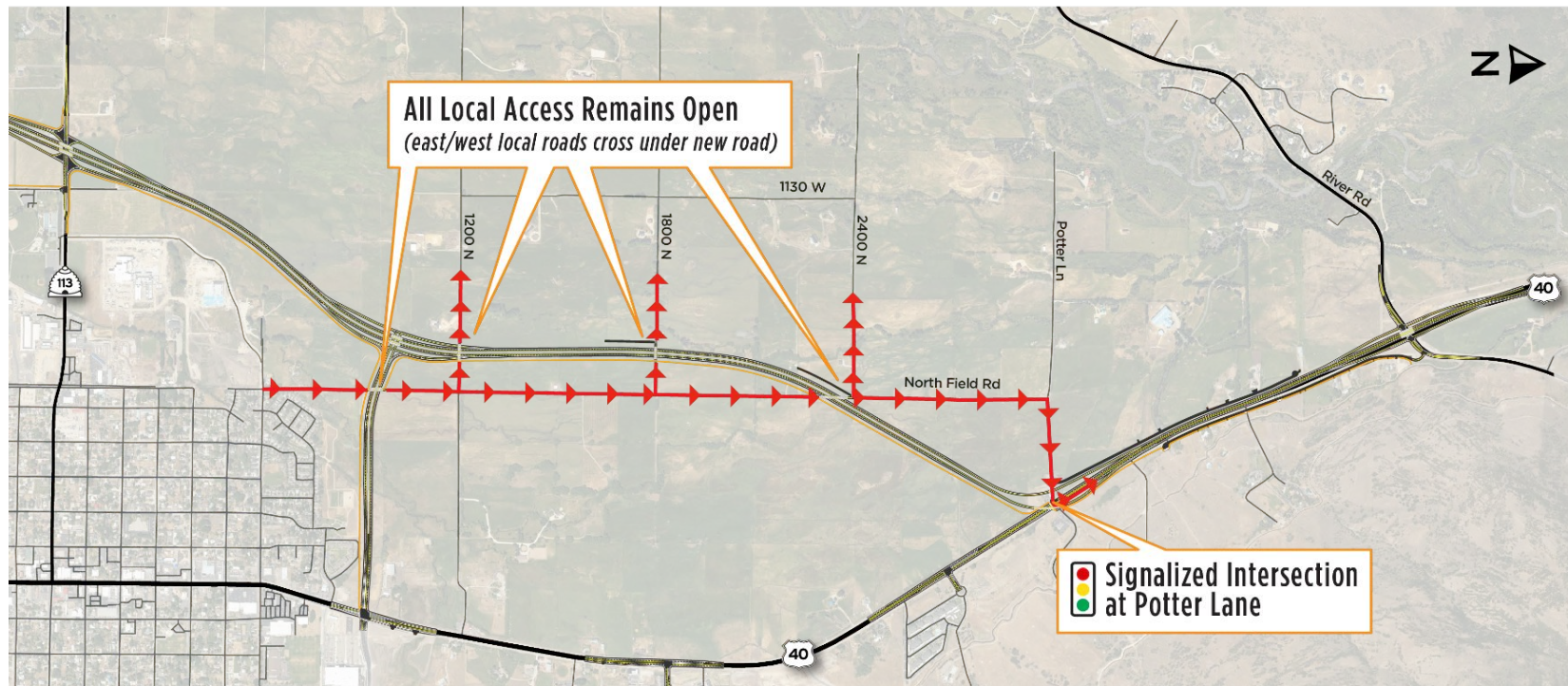
Southfield Road Neighborhood Access

Access to northbound corridor



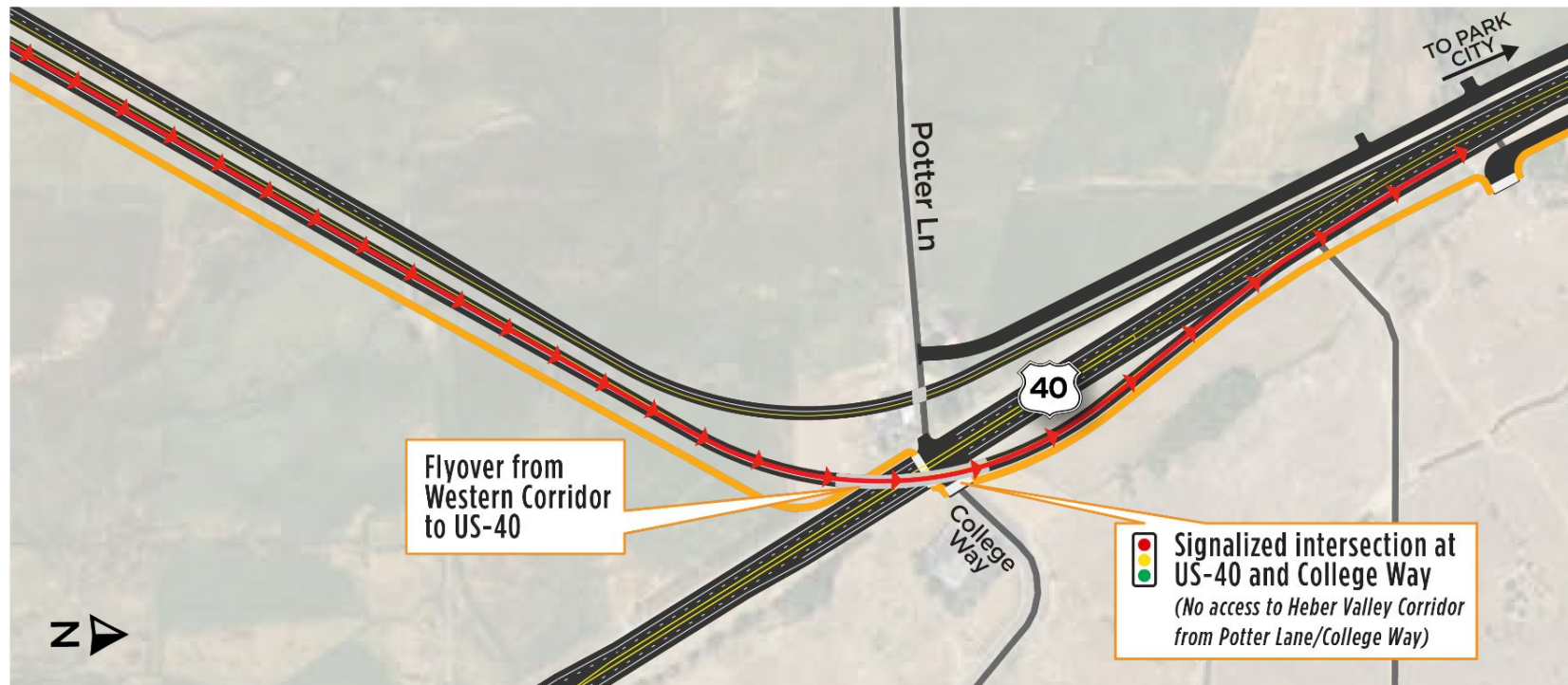
North Fields Access

Alternative B



North Fields Access

Alternative B - Potter Lane



What to Expect Next

Local Government Coordination

- Update at Wasatch County Council work session (Aug. 13, 4 p.m.)
- Update at Heber City Council General Session (Aug. 19, 6 p.m.)
- Updates to other local governments, if requested

Public Outreach

- Respond to property owner inquiries

Detailed Evaluation of Alternatives

- Evaluate benefits and impacts from alternatives
- Identify preferred alternative and publish Draft EIS (anticipated this fall)

What to expect next

Draft EIS: Notifications

(beginning at least two weeks ahead of hearings)

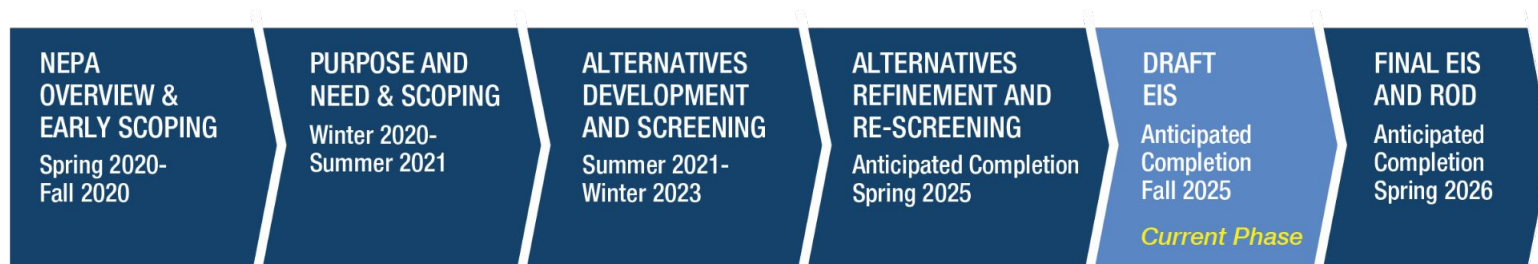
- ✓ Website
- ✓ Email
- ✓ Salt Lake Tribune, Deseret News
- ✓ Community newsletters
- ✓ Social media (Facebook Group)
- ✓ Social media ads
- ✓ Mailed postcards

Public Engagement

Draft EIS: What to Expect

- Public meetings and 45-day public comment period
- In-person public hearing: ask questions, view project materials, submit a public comment, or speak to a UDOT ROW agent
- Virtual meeting will include presentation and Q&A session
- Same project materials will be available at both meetings

Schedule



ONGOING STAKEHOLDER ENGAGEMENT

- | | | | | | |
|--|---|---|---|---|---|
| <ul style="list-style-type: none">• Virtual public meeting• 30-day comment period | <ul style="list-style-type: none">• File Notice of Intent to begin NEPA process• 45-day comment period | <ul style="list-style-type: none">• Development alternative concepts• 30-day comment period (concepts)• 45-day comment period (screening) | <ul style="list-style-type: none">• Revise and screen alternatives• Publish revised screening report with refined alternatives | <ul style="list-style-type: none">• Public hearing• 45-day comment period• Preferred alternative identified | <ul style="list-style-type: none">• Respond to comments• Revise EIS• Publish decision• Public engagement |
|--|---|---|---|---|---|

MONTHLY COORDINATION WITH LOCAL GOVERNMENT AND REGULAR STAKEHOLDER WORKING GROUP MEETINGS



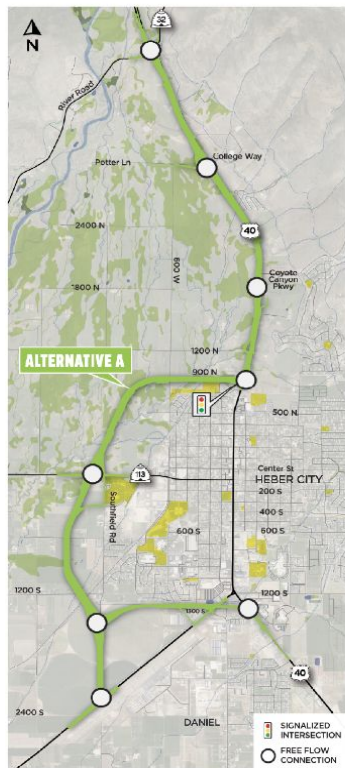
Heber Valley Corridor



ENVIRONMENTAL IMPACT STATEMENT

The environmental review, consultation, and other actions required by applicable Federal environmental laws for this project are being or have been carried-out by UDOT pursuant to 23 U.S.C. 327 and a Memorandum of Understanding dated May 26, 2022, and executed by FHWA and UDOT.

Alternatives for Draft EIS

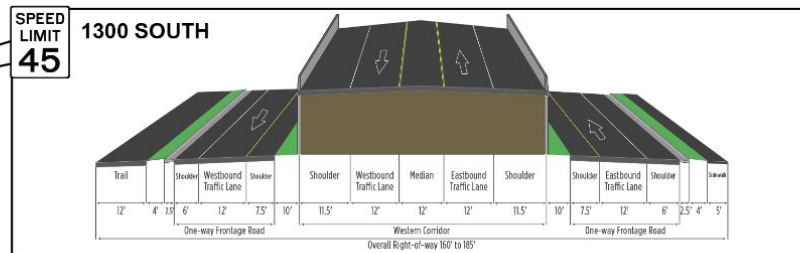
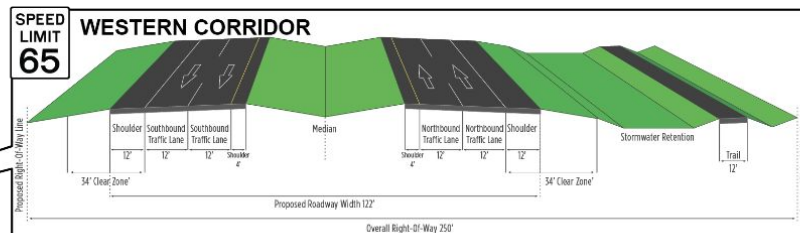
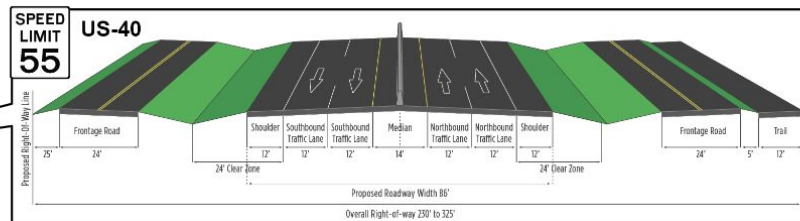
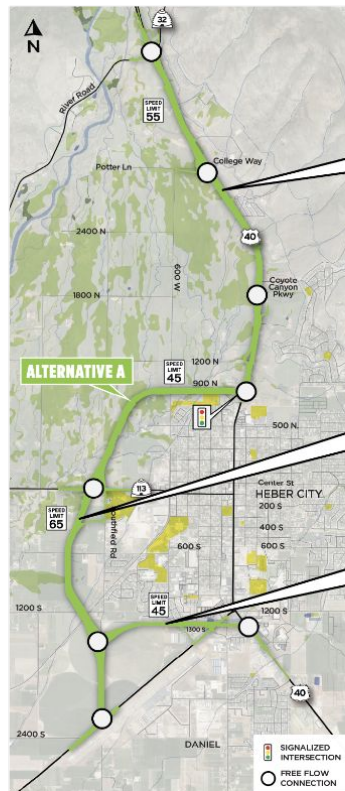


⇒ **Alternative A (on US-40)**

⇒ **Alternative B (off US-40)**

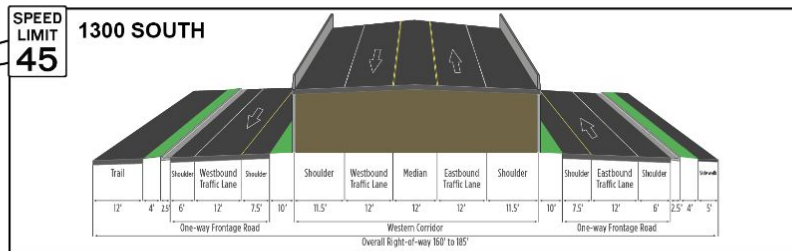
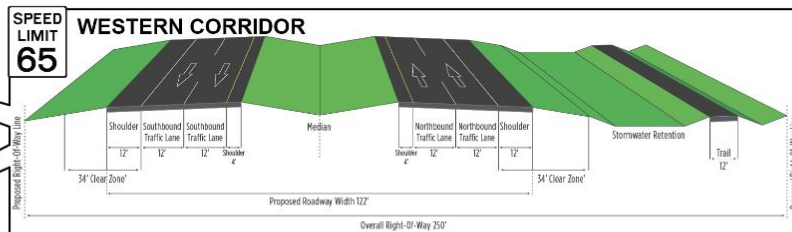
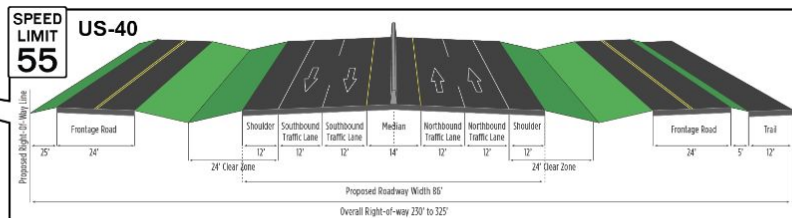
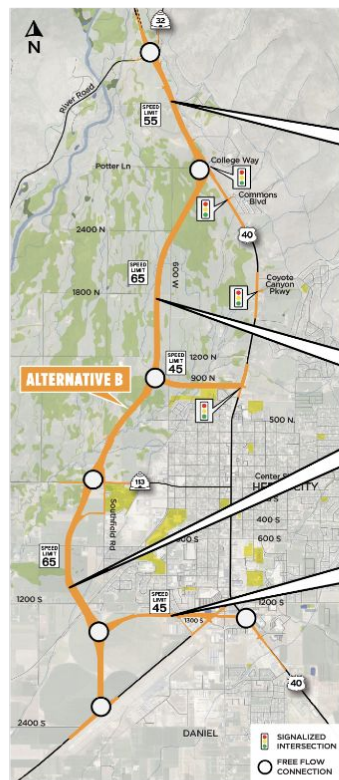


Alternative A



- Freeway facility (similar to US-40 north of SR-32)
- Uses existing US-40
- Requires frontage roads on US-40 for local connectivity
- Everything south of 900 N is the same for both alternatives

Alternative B



- Freeway facility
(similar to US-40 north of SR-32)
- New corridor through North Fields
- US-40 remains similar to existing conditions south of College Way

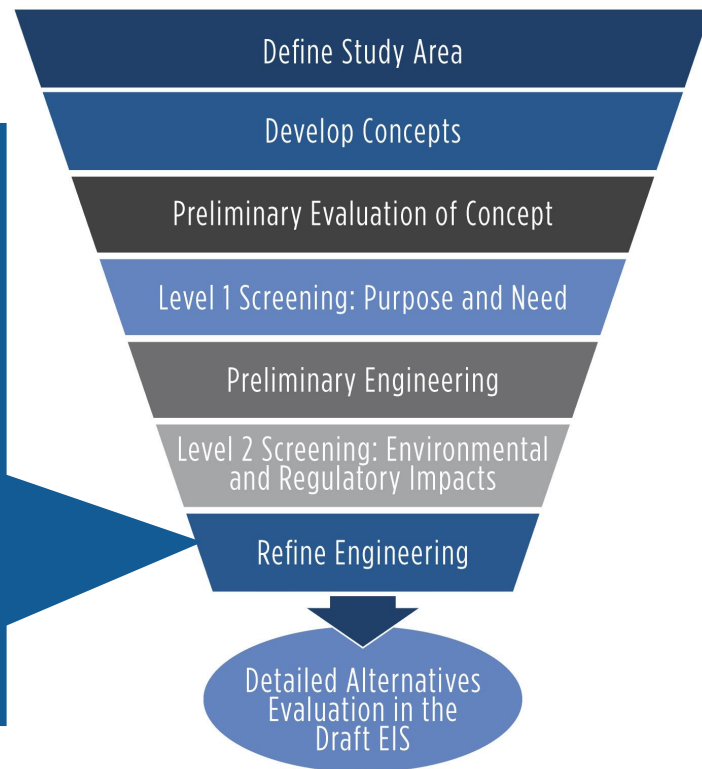
5/2/2013

Completed Activities

Alternatives Design Refinements

Design elements will address:

- Non-motorized transportation
- Drainage and Stormwater management
- Access and connectivity to local road networks
- Conflict with major infrastructure and utilities

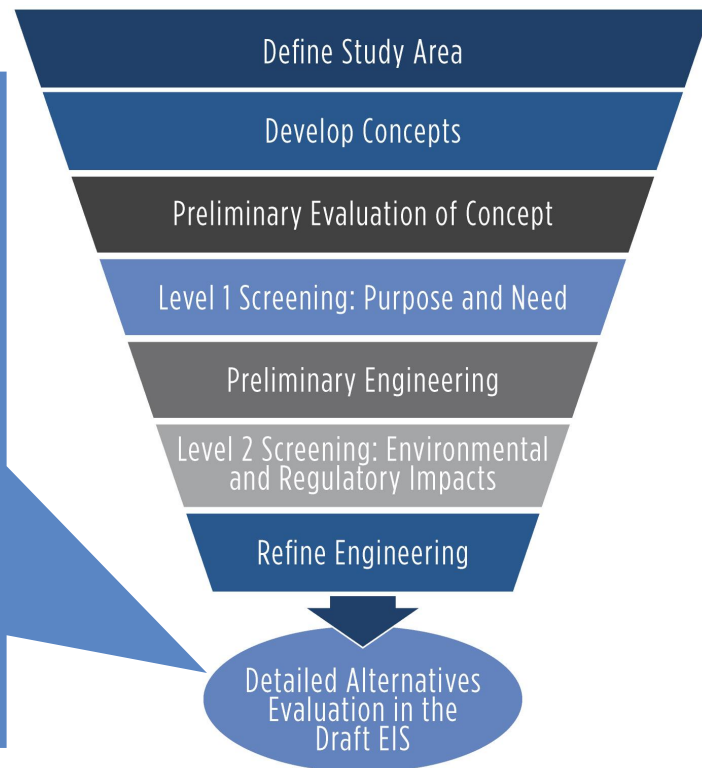


Current Activities

Detailed Evaluation of Alternatives (Draft EIS)

Impacts that will be evaluated include:

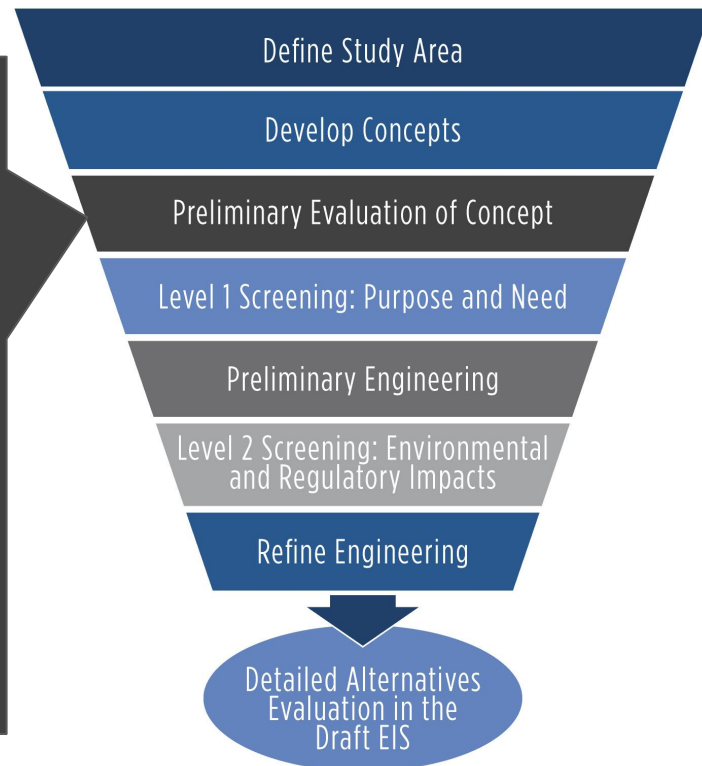
- Land use (including open space)
- Farmland
- Water quality
- Wildlife
- Visual resources
- Social and community resources
- Economics



Alternative Screening Process

The process started with a preliminary evaluation of alternatives. To be advanced to the next level of screening, alternatives needed to:

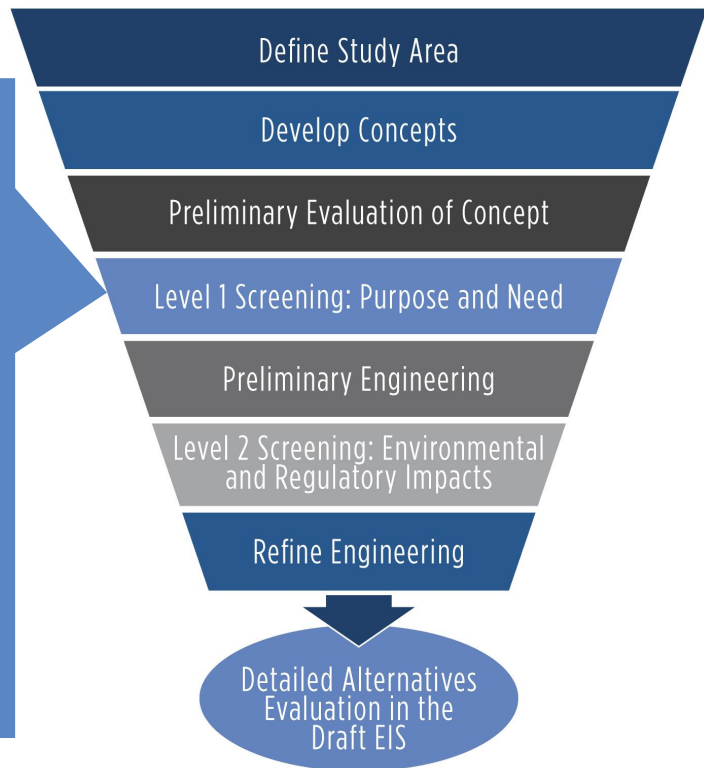
- ✓ Meet project objectives
- ✓ Not be redundant with other alternatives
- ✓ Be within the project study area
- ✓ Be technically and economically feasible
- ✓ Not be planned as a separate project
- ✓ Not be part of a larger alternative



Level 1 Screening Process

Transportation considerations evaluated include:

- Improve regional and local mobility on US-40 through 2050
- Provide opportunities for non-motorized transportation
- Allow Heber City to meet their vision for the historic town center



Level 2 Screening Process

Environmental and regulatory impacts include:

- Wetlands
- Section 4(f) resources
- Property impacts
- Cost

