



Heber Valley Corridor



ENVIRONMENTAL IMPACT STATEMENT

Heber City Council Meeting

September 16, 2025

Completed Activities

Local Government Coordination

- Provided updates in August
 - Update at the [Wasatch County Council](#) on Aug 13 (UDOT at 03:30)
 - Update at [Heber City Council](#) on Aug 19 (UDOT at 3:27:05)

Public Outreach

- Responded to property owner inquiries and met with owners as requested

Ongoing Activities

Public Outreach

- Coordinating with potentially impacted property owners, if requested

Detailed Alternatives Analysis

- Conducting field surveys in areas that haven't been surveyed previously
- Evaluating the project alternatives in depth, including benefits and impacts
- Identifying the preferred alternative

Local Government Coordination

- Meeting with Heber City and Wasatch County staff on a monthly basis
- Will meet with other local governments, if requested

1300 South Segment - History

- Essential connection
- Identified in multiple, previous studies and transportation plans
- Corridor for Right-of-way Preservation (2006–2007)
 - Heber City Resolution 2007-05 (June 21, 2007)
 - Wasatch County Resolution 06-04 (August 9, 2006)



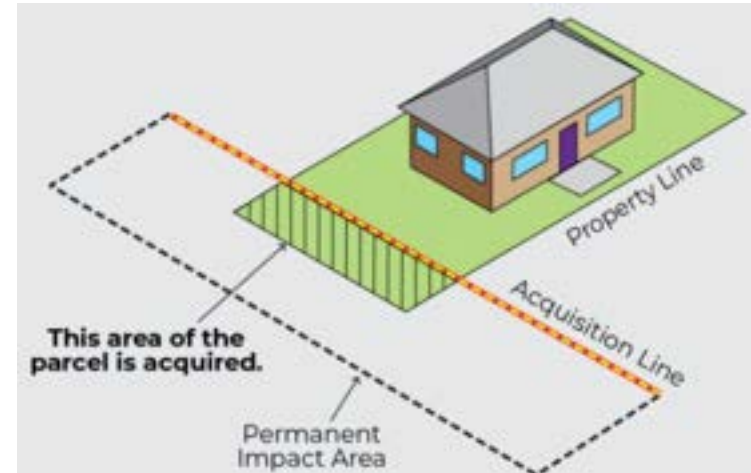
1300 South - Current Analysis

- Validated by travel demand modeling for this EIS
 - Necessary to meet the purpose and need, to improve regional and local mobility
 - 50% of traffic is local
 - 1300 South is an important connection for local traffic and access to commercial area
- Worked to minimize impacts
- Travel patterns will change
 - Some out of direction travel
 - Results in less traffic on local streets
 - Results in less traffic on Main Street



ROW Process

- Outline of timeline and process
 - Selected alternative in the Record of Decision (estimated as spring 2026)
 - Funding of a project (HVC is currently unfunded)
 - Final design (impacts could change)
 - ROW process initiates and property owners contacted directly by UDOT
 - Appraisal
 - Provide additional Information (if necessary)
 - Obtain a second appraisal (if requested)
 - Reject or accept the offer
- ROW agent will be present at the public hearing to answer questions



North Fields and Wetland Mitigation

- Either alternative requires wetland mitigation
- UDOT will prioritize wetland mitigation in the North Fields
- Wetland mitigation sites are protected in perpetuity
 - No development possible
 - Views, wetlands, habitat protected
 - These are not recreation features
- Local example:
 - Wetland mitigation site for Creamayre Creek near the Back 40 Grill
 - Established for the previous US-40 widening project



Project Phasing

- Project will likely be phased
- Phasing dependent on need and funding
- Phasing determined in final design
- There is currently no funding for final design and construction

SR-113 Intersection

- SR-113 and Southfield Road Intersection:
 - A signal at SR-113 and Southfield Road does not meet spacing requirements.
 - Left-hand turns may be restricted in the future and other accommodations could be made, such as allowing u-turns at the high school signal.
- Benefits:
 - Safety (no queuing issues between signals and corridor)
 - Improved mobility overall
 - Less traffic on Southfield Road
- Local governments could consider realigning Southfield Road to the high school intersection in the future.



What to Expect Next

Local Government Coordination

- Update at Wasatch County Council work session (Oct. 8, 4 p.m.)
- Update at Heber City Council General Session (Oct. 21, 6 p.m.)
- Updates to other local governments, if requested

Public Outreach

- Respond to property owner inquiries

Detailed Evaluation of Alternatives

- Evaluate benefits and impacts from alternatives
- Identify preferred alternative and publish Draft EIS (anticipated this fall)

Public Engagement

Draft EIS: What to Expect

- Two public meetings and minimum 45-day public comment period
 - Virtual meeting will include presentation and Q&A session
 - In-person public hearing: ask questions, view project materials, submit a public comment, or speak to a UDOT ROW agent
- Same project materials will be available at both meetings

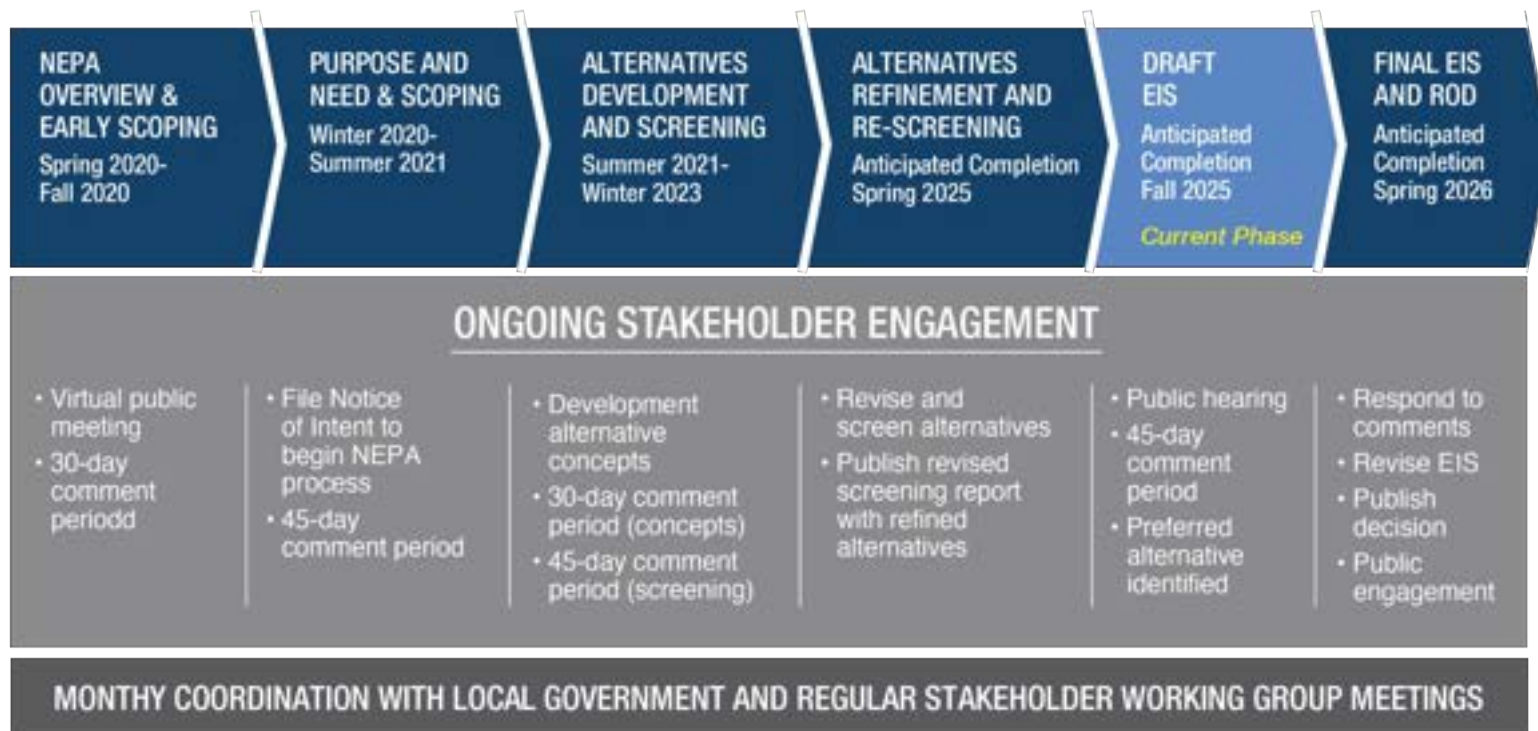
What to expect next

Draft EIS: Notifications

(beginning at least two weeks ahead of meetings)

- ✓ Website
- ✓ Email
- ✓ Salt Lake Tribune, Deseret News
- ✓ Community newsletters
- ✓ Social media (Facebook Group)
- ✓ Social media ads
- ✓ Mailed postcards

Schedule





Heber Valley Corridor



ENVIRONMENTAL IMPACT STATEMENT

The environmental review, consultation, and other actions required by applicable Federal environmental laws for this project are being or have been carried-out by UDOT pursuant to 23 U.S.C. 327 and a Memorandum of Understanding dated May 26, 2022, and executed by FHWA and UDOT.